

# SELF-ADHESIVE MEMBRANE

## APPLICATION<sup>[\*]</sup>

<sup>[\*]</sup> Can be applied to various substrates including: CLT (Cross Laminated Timber), OSB, plywood, aluminium, steel, concrete, cement board, gypsum, board, other.

# MAXIMUM PROTECTION

## PREFABRICATION

Installing self-adhesive membranes in the factory is advantageous in many ways:

- the membrane is applied horizontally rather than vertically to a panel
- installation is facilitated because it is carried out in a cleaner environment than at the construction site
- once on the construction site, the panel is already ready, without the need for intermediate processing



Easy installation without the need for tapes



Fast and secure adhesion

## ALL THE BENEFITS

- **TIME SAVINGS:** prefabricated is faster
- **ECONOMIC SAVINGS:** less assembly labour, less risk of damage
- **SAFETY:** membranes are non-slip, high weight, suitable for different application contexts
- **LIFTING POSSIBILITY:** membranes are also suitable for vacuum lifting systems ( after testing in the factory)
- **CUSTOMIZATION:** All self-adhesive membranes are customizable in terms of brand, weight and size

## PROTECTION

Timber panels are protected from the weather both during transport and at the construction site. Membranes prevent damage caused by water, moisture or other unforeseen events, improving the effectiveness of the building construction process.

Because they are self-adhesive and without the need for mechanical fastening and additional sealing tapes, installation is immediate and quick even on the construction site.



Complete protection from water damage and weathering



Non-slip and panel protection



# ADHESIVE MEMBRANES

## DEFENCE ADHESIVE



Water vapour permeability	<div style="display: flex; align-items: center;"> <div style="width: 100px; height: 10px; background: linear-gradient(to right, #ccc, #000); border-radius: 5px;"></div> <div style="margin-left: 5px;"> <span style="color: green;">●</span> <b>TRASPIR</b> </div> <div style="width: 100px; height: 10px; background: #ccc; border-radius: 5px; margin-left: 10px;"></div> <div style="margin-left: 5px;"><b>BARRIER</b></div> </div>	
Composition	EVA/PP/glue/liner	<b>Sizes available</b>
Type of glue	repositionable within minutes	1,55/0,99/0,49/0,385 m



## DEFENCE ADHESIVE SPEEDY



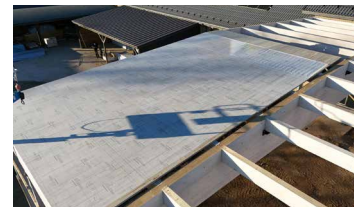
Water vapour permeability	<div style="display: flex; align-items: center;"> <div style="width: 100px; height: 10px; background: linear-gradient(to right, #ccc, #000); border-radius: 5px;"></div> <div style="margin-left: 5px;"> <span style="color: green;">●</span> <b>TRASPIR</b> </div> <div style="width: 100px; height: 10px; background: #ccc; border-radius: 5px; margin-left: 10px;"></div> <div style="margin-left: 5px;"><b>BARRIER</b></div> </div>	
Composition	EVA/PP/glue	<b>Sizes available</b>
Type of glue	repositionable within minutes	1,55/0,49/0,385 m



## DEFENCE ADHESIVE TRASPIR EVO



Water vapour permeability	<div style="display: flex; align-items: center;"> <div style="width: 100px; height: 10px; background: linear-gradient(to right, #000, #ccc); border-radius: 5px;"></div> <div style="margin-left: 5px;"> <span style="color: green;">●</span> <b>TRASPIR</b> </div> <div style="width: 100px; height: 10px; background: #ccc; border-radius: 5px; margin-left: 10px;"></div> <div style="margin-left: 5px;"><b>BARRIER</b></div> </div>	
Composition	PU/PP/glue/liner	<b>Sizes available</b>
Type of glue	breathable, very stable and durable	1,55/0,99/0,49/0,385 m



## DEFENCE ADHESIVE REMOVABLE



Water vapour permeability	<div style="display: flex; align-items: center;"> <div style="width: 100px; height: 10px; background: #ccc; border-radius: 5px;"></div> <div style="margin-left: 5px;"><b>TRASPIR</b></div> <div style="width: 100px; height: 10px; background: linear-gradient(to right, #ccc, #000); border-radius: 5px; margin-left: 10px;"></div> <div style="margin-left: 5px;"><b>BARRIER</b></div> </div>	
Composition	PP/glue/liner	<b>Sizes available</b>
Type of glue	removable	1,55/0,385 m



## BARRIER ALU NET ADHESIVE 300



Water vapour permeability	<div style="display: flex; align-items: center;"> <div style="width: 100px; height: 10px; background: #ccc; border-radius: 5px;"></div> <div style="margin-left: 5px;"><b>TRASPIR</b></div> <div style="width: 100px; height: 10px; background: linear-gradient(to right, #ccc, #000); border-radius: 5px; margin-left: 10px;"></div> <div style="margin-left: 5px;"><b>BARRIER</b></div> </div>	
Composition	PET/AL/PE/grid/PE/glue/liner	<b>Sizes available</b>
Type of glue	repositionable within minutes	1,45/0,36 m



## VAPOR ADHESIVE 260



Water vapour permeability	<div style="display: flex; align-items: center;"> <div style="width: 100px; height: 10px; background: linear-gradient(to right, #ccc, #000); border-radius: 5px;"></div> <div style="margin-left: 5px;"> <span style="color: green;">●</span> <b>TRASPIR</b> </div> <div style="width: 100px; height: 10px; background: #ccc; border-radius: 5px; margin-left: 10px;"></div> <div style="margin-left: 5px;"><b>BARRIER</b></div> </div>	
Composition	PP/PP/PP/glue/liner	<b>Sizes available</b>
Type of glue	breathable, very stable and durable	1,45/0,36 m



## TRASPIR ADHESIVE 260



Water vapour permeability	<div style="display: flex; align-items: center;"> <div style="width: 100px; height: 10px; background: linear-gradient(to right, #000, #ccc); border-radius: 5px;"></div> <div style="margin-left: 5px;"> <span style="color: green;">●</span> <b>TRASPIR</b> </div> <div style="width: 100px; height: 10px; background: #ccc; border-radius: 5px; margin-left: 10px;"></div> <div style="margin-left: 5px;"><b>BARRIER</b></div> </div>	
Composition	PP/PP/PP/glue/liner	<b>Sizes available</b>
Type of glue	breathable, very stable and durable	1,45/0,36 m



## TRASPIR EVO UV ADHESIVE



Water vapour permeability	<div style="display: flex; align-items: center;"> <div style="width: 100px; height: 10px; background: linear-gradient(to right, #000, #ccc); border-radius: 5px;"></div> <div style="margin-left: 5px;"> <span style="color: green;">●</span> <b>TRASPIR</b> </div> <div style="width: 100px; height: 10px; background: #ccc; border-radius: 5px; margin-left: 10px;"></div> <div style="margin-left: 5px;"><b>BARRIER</b></div> </div>	
Composition	PP/PU/glue/liner	<b>Sizes available</b>
Type of glue	breathable, very stable and durable	1,45/0,36 m





VIDEO

## RECOMMENDATIONS FOR INSTALLATION

### APPLICATION IN THE FACTORY



1 Clean the surface.



2 Unroll the membrane and apply it on the panel. Use roller to improve the adhesion on substrate.



3 Remove release liner and adhere to the substrate from top down.



4 Remove second release liner and adhere from center of sheet.



5 Pre-processing in the factory simplifies the installation process, saving time and resources.



6 Adhesive membrane must wrap the entire panel.



7 Suitable for vacuum lifting systems.



8 The panels prepared in this way are easily transported to the construction site.

## OVERLAPPING IN THE FACTORY



Overlap minimum 150mm for either vertical or horizontal application. Use roller to improve the adhesion on substrate.



Remove both release liners and adhere to the substrate.

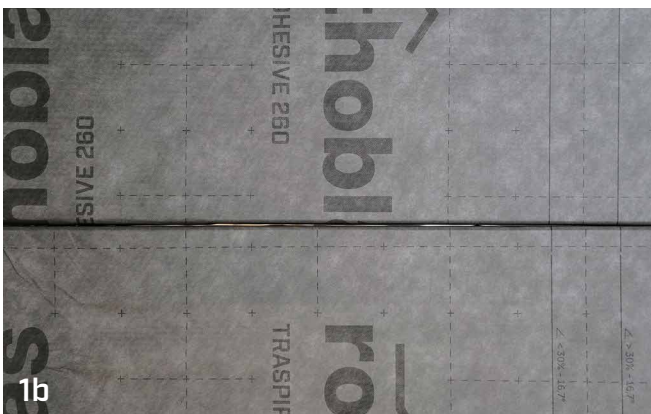
## JOINT ON SITE



Vertical joint. Bring panels together to join them on site.



Join panels onsite using FLEXI60 or SPEEDY60 on vertical joints. Use roller to improve the adhesion of tape on substrate.



Horizontal joint. Bring panels together to join them on site.



Use FLEXI60 or SPEEDY60 on horizontal joints on site. Use FLEXI100, FLEXI5050, FLEXI7575, SPEEDY100 or SPEEDY150 to increase the safety of horizontal joints. Use roller to improve the adhesion of tape on substrate.

## RELATED PRODUCTS



**SPEEDY BAND**  
UNIVERSAL SINGLE-SIDED TAPE  
WITHOUT RELEASE LINER



**FLEXI BAND**  
UNIVERSAL SINGLE-SIDED  
HIGH-ADHESIVE TAPE



VIDEO

## RECOMMENDATIONS FOR INSTALLATION

### APPLICATION ON FLOORS



### SEALING FASTENING SYSTEMS



1 SPEEDY BAND 300, FLEXI BAND, PLASTER BAND

2 PROTECT, BYTUM BAND  
PRIMER SPRAY, PRIMER

## RECOMMENDATIONS FOR INSTALLATION

### APPLICATION ON WINDOW



Cut out windows openings.



Stick membrane.



Seal the window with rothoblaas flashing tape.



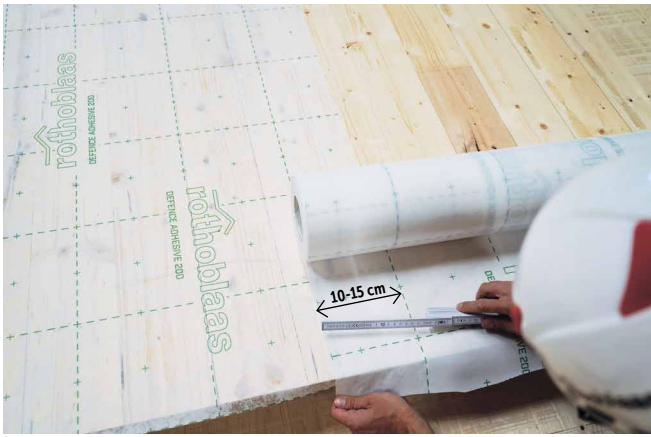
Seal window joints on the inside and outside.

# RECOMMENDATIONS FOR INSTALLATION



VIDEO

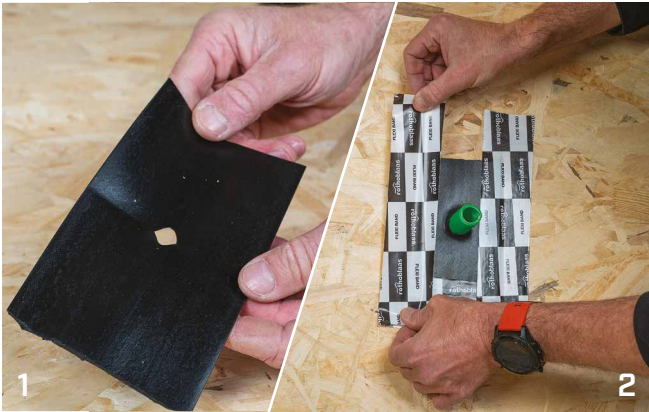
## APPLICATION ON FLOORS





## RECOMMENDATIONS FOR INSTALLATION

### SEALING OF CABLES AND CORRUGATED TUBES THROUGH PIPES (MANICA FLEX OR MANICA PLASTER)



### SEAL PIPE PENETRATION (BLACK BAND)



**Rotho Blaas Srl**

Via dell'Adige N.2/1 | 39040, Cortaccia (BZ) | Italia  
Tel: +39 0471 81 84 00 | Fax: +39 0471 81 84 84  
info@rothoblaas.com | www.rothoblaas.com

