

AOS01 + WAVE

ANCHOR POINT FOR CORRUGATED SHEET METAL ROOFS

SIMPLE

Simple and quick installation, thanks to the shape obtained with a single plate.

COMPLETE

The package includes fasteners and cellular rubber gaskets, to ensure waterproofing.

EN 795:2012 A	CEN/TS 18415:2013	UNI 11578:2015 A
---------------------	----------------------	------------------------



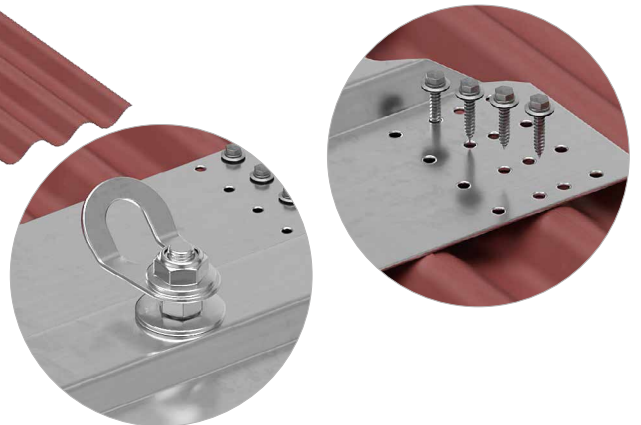
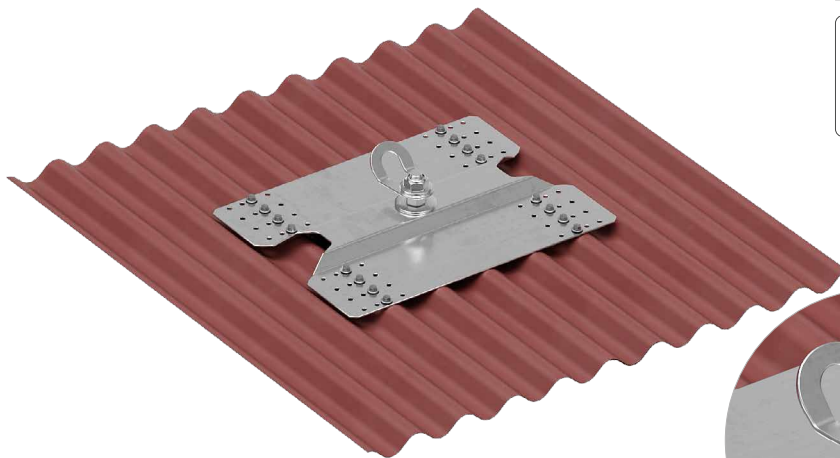
MAXIMUM NUMBER
OF USERS



LOAD DIRECTION



TYPES OF
APPLICATION



TECHNICAL DATA*

substructure	minimum thickness	fastening systems included ⁽¹⁾
Fe	0,63 mm	self-drilling screws 5,5 x 25 mm A2 with EPDM washer (x16) and 4 EPDM gaskets

* The values indicated are the result of experimental tests carried out under the supervision of third parties in accordance with the standards referred to. For a correct calculation report with minimum distances according to the standard requirements, the substructure must be checked by a qualified engineer before installation.

WAVE | CODES AND DIMENSIONS

CODE	material		B [mm] [in]	H [mm] [in]	L [mm] [in]	pcs	
WAVE	AISI 304 stainless steel grade 1.4301		420 16 9/16	65 2 9/16	322 12 11/16	1	
AOS01	AISI 304 stainless steel grade 1.4301		60 2 3/8	- -	98 3 7/8	1	