

ROD

ANCHOR POINT FOR STEEL STRUCTURES

PRACTICAL

Thanks to its compact size, this anchor can be installed quickly and easily.

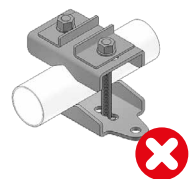
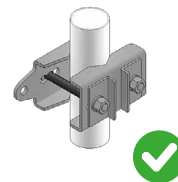
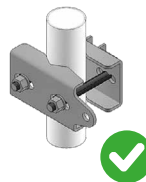
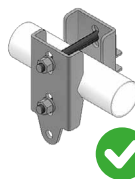
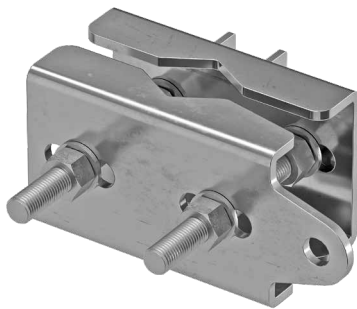
VERSATILE

It can be assembled on tubular and box-type steel structures of different sizes.

EN
785-A



MAXIMUM NUMBER
OF USERS



CODES AND DIMENSIONS

CODE	material	dimensions [mm] [in]	anchor point diameter [[mm] [in]	weight [kg]	pcs
ROD	stainless steel	208 x 97 x 75-140 8 3/16 x 3 13/16 x 2 15/16-5 11/16	17 0.67	2,5	1

The values indicated are the result of experimental tests carried out under the supervision of third parties in accordance with the standard referred to. For a calculation report with minimum distances according to the relevant standard requirements, the substructure must be checked by a qualified engineer before installation.

APPLICATIONS

