

FLANGE HEAD SCREW

SAW TIP

Special self-perforating tip with serrated thread (SAW tip) that cuts the timber grains, facilitating initial grip and subsequent pull-through.

INTEGRATED WASHER

The flange head serves as washer and ensures high head strength and pull-through. Ideal in the presence of wind or variations in timber dimensions.

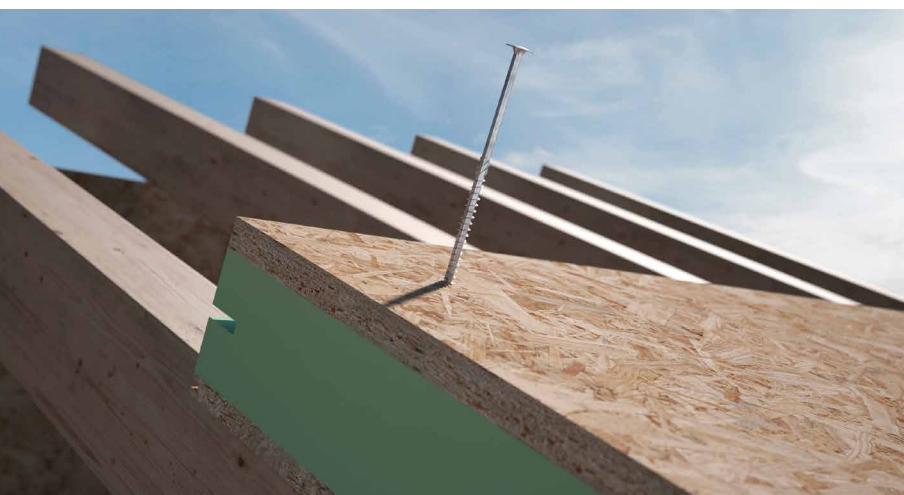
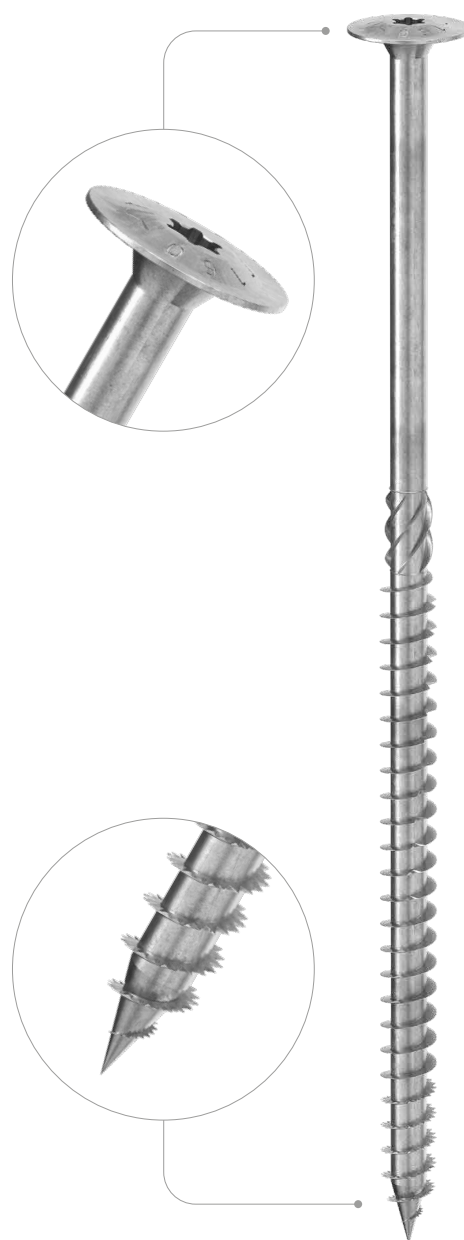
LONGER THREAD

Greater thread length (60%) to ensure superb joint closure and great versatility.

SOFTWOOD

Optimised geometry for maximum performance on the most common construction timbers.

DIAMETER [in]	0.24 <input type="radio"/> 0.32 <input type="radio"/> 0.63 <input type="radio"/>
LENGTH [in]	1 9/16 <input type="radio"/> 3 1/8 <input checked="" type="radio"/> 15 3/4 <input type="radio"/> 39 3/8 <input type="radio"/>
EXPOSURE CONDITION	EC1 <input checked="" type="radio"/> DRY <input type="radio"/>
ATMOSPHERIC CORROSIVITY	C1 <input checked="" type="radio"/> C2 <input type="radio"/>
WOOD CORROSIVITY	T1 <input checked="" type="radio"/> T2 <input type="radio"/>
MATERIAL	Zn ELECTRO PLATED electrogalvanized carbon steel



FIELDS OF USE

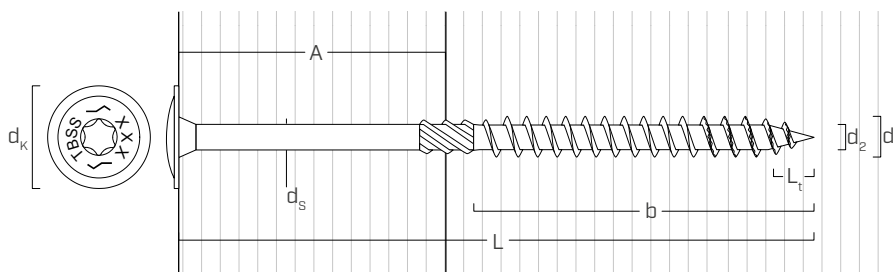
- timber based panels
- fibreboard and MDF panels
- solid timber
- glulam (Glued Laminated Timber)
- CLT and LVL

CODES AND DIMENSIONS

d ₁ [mm] [in]	CODE	L		b		A	pcs
		[mm]	[in]	[mm]	[in]	[in]	
6 0.24 #14 TX 30	TBSS680	80	3 1/8	50	1 15/16	1	100
	TBSS6100	100	4	60	2 3/8	1 1/2	100
	TBSS6120	120	4 3/4	75	2 15/16	1 3/4	100
	TBSS6140	140	5 1/2	80	3 1/8	2 1/4	100
	TBSS6160	160	6 1/4	90	3 1/2	2 3/4	100

d ₁ [mm] [in]	CODE	L		b		A	pcs
		[mm]	[in]	[mm]	[in]	[in]	
8 0.32 TX 40	TBSS8180	180	7 1/8	100	4	3	50
	TBSS8200	200	8	100	4	3 3/4	50
	TBSS8220	220	8 5/8	100	4	4 1/2	50
	TBSS8240	240	9 1/2	100	4	5 1/2	50
	TBSS8260	260	10 1/4	100	4	6 1/4	50
	TBSS8280	280	11	100	4	7	50
	TBSS8300	300	11 3/4	100	4	7 3/4	50
	TBSS8320	320	12 5/8	120	4 3/4	7 3/4	50
	TBSS8340	340	13 3/8	120	4 3/4	8 1/2	50
	TBSS8360	360	14 1/4	120	4 3/4	9 1/4	50
	TBSS8380	380	15	120	4 3/4	10	50
	TBSS8400	400	15 3/4	120	4 3/4	11	50

GEOMETRY



Nominal diameter	d ₁	[in] ⁽¹⁾	0.24	0.32
		[mm]	6	8
Outer thread diameter	d ₁	[in]	0.236	0.315
Head diameter	d _K	[in]	0.610	0.748
Root diameter	d ₂	[in]	0.156	0.213
Shank diameter	d _S	[in]	0.169	0.228
Tip length	L _t	[in]	0.236	0.315
Pre-drilling hole diameter ⁽²⁾	d _{V,G≤0.55}	[in]	5/32	13/64
Pre-drilling hole diameter ⁽³⁾	d _{V,G>0.55}	[in]	5/32	15/64

⁽¹⁾The nominal diameter of the screw is converted into imperial units and rounded up to the nearest decimal point.

⁽²⁾Pre-drilling applies to timber with G≤0.55 (optional).

⁽³⁾Pre-drilling applies to timber with G>0.55 (required).



TIMBER FRAME & SIP PANELS

Range of sizes designed for fastening applications of medium to large structural elements such as lightweight boards and frames up to SIP and Sandwich type panels.