

SCI A4 | AISI316

COUNTERSUNK SCREW

SUPERIOR STRENGTH

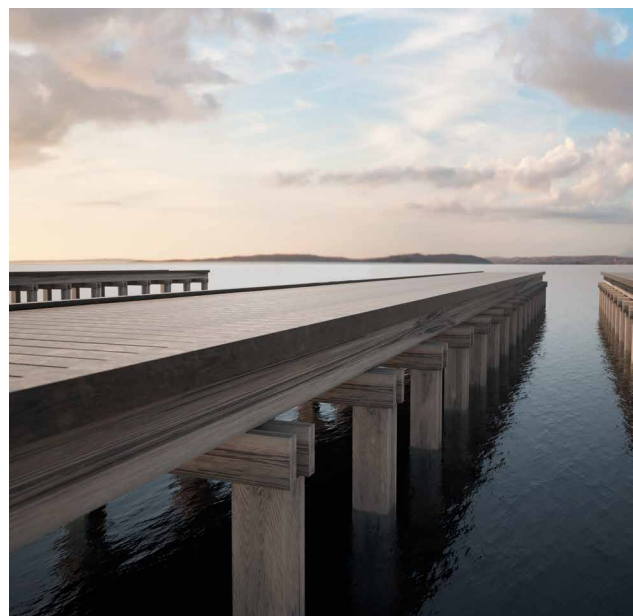
Special asymmetrical umbrella thread, elongated reamer cutter and under-head cutting ribs provide the screw with higher torsional strength and safer screwing.

A4 | AISI316

A4 | AISI316 austenitic stainless steel for high corrosion resistance. Ideal for environments adjacent to the sea in corrosivity class C5 and for insertion on the most aggressive timbers in class T5.

T5 TIMBER CORROSIVITY

Suitable for use in applications on aggressive woods with an acidity (pH) level below 4 such as oak, Douglas fir and chestnut, and in wood moisture conditions above 20%.



DIAMETER [in]

0.14 ☐ 0.20 ☒ 0.32

LENGTH [in]

13/16 ☐ 1 15/16 ☒ 4 ☐ 12 5/8

EXPOSURE CONDITION



ATMOSPHERIC CORROSIVITY

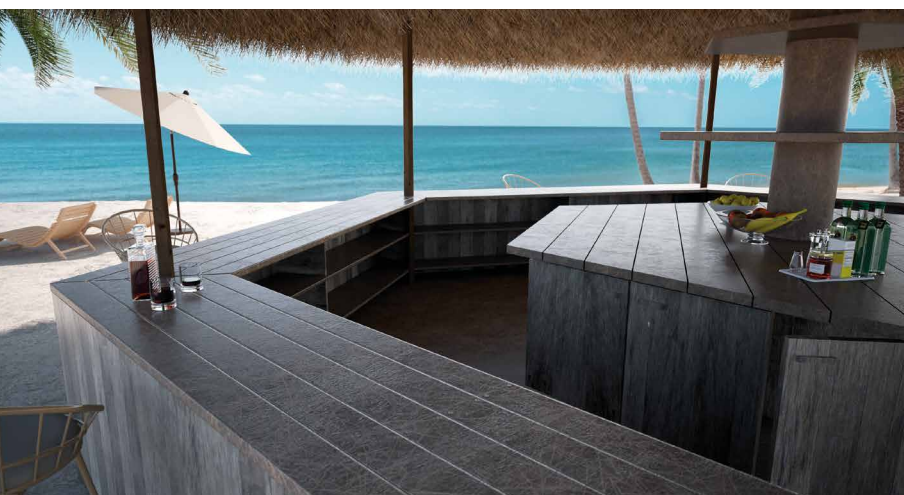
C1 ☐ C2 ☐ C3 ☐ C4 ☒ C5 ☐

WOOD CORROSIVITY

T1 ☐ T2 ☐ T3 ☐ T4 ☐ T5 ☒

MATERIAL

A4
AISI 316 A4 | AISI316 austenitic stainless steel
(CRC III)



FIELDS OF USE

Outdoor use in highly aggressive environments. Wooden boards with density of $< 470 \text{ kg/m}^3$ [$G = 0.53$] (without pre-drill) and $< 620 \text{ kg/m}^3$ [$G = 0.72$] (with pre-drill).

CODES AND DIMENSIONS

SCI A4 | AISI316

d_1 [mm] [in]	CODE	L [mm] [in]	b [mm] [in]	A [in]	pcs
5 0.20 #11 TX 25	SCI5050A4	50 1 15/16	24 15/16	1	200
	SCI5060A4	60 2 3/8	30 1 3/16	1	200
	SCI5070A4	70 2 3/4	35 1 3/8	1 1/4	100
	SCI5080A4	80 3 1/8	40 1 9/16	1 1/2	100
	SCI5090A4	90 3 1/2	45 1 3/4	1 3/4	100
	SCI50100A4	100 4	50 1 15/16	1 3/4	100

HBS EVO C5

COUNTERSUNK SCREW

C5
EVO
COATING

EC3

C5

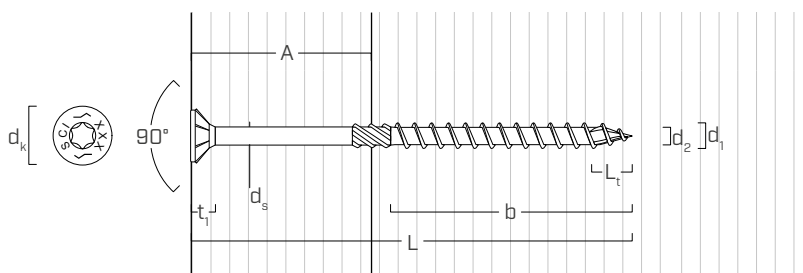
T4

It is the screw of choice when high mechanical performance is required under very adverse environmental and wood corrosive conditions.

Find out more on page 68.



GEOMETRY

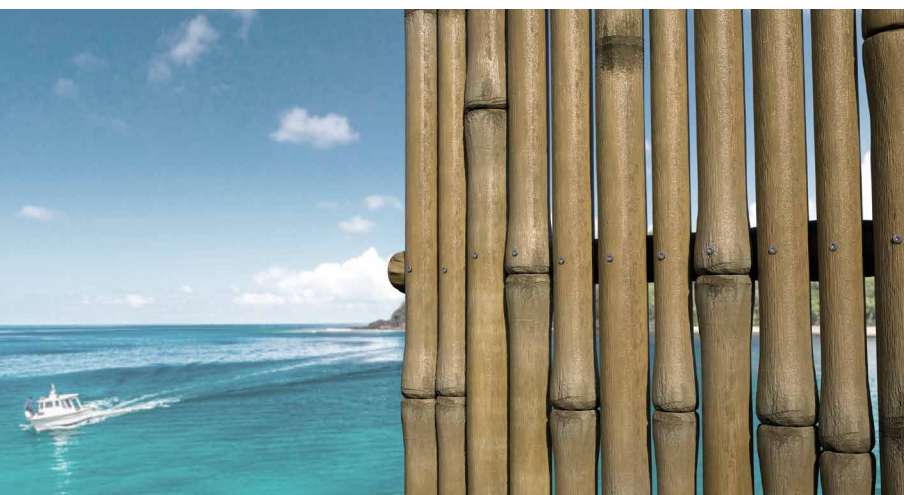


Nominal diameter	d_1	[in] ⁽¹⁾	0.20
Outer thread diameter	d_1	[mm] [in]	5 0.197
Head diameter	d_K	[in]	0.394
Root diameter	d_2	[in]	0.134
Shank diameter	d_5	[in]	0.144
Head thickness	t_1	[in]	0.183
Tip length	L_t	[in]	0.197
Pre-drilling hole diameter ⁽²⁾	$d_{V,G \leq 0.55}$	[in]	1/8
Pre-drilling hole diameter ⁽³⁾	$d_{V,G > 0.55}$	[in]	9/64

⁽¹⁾The nominal diameter of the screw is converted into imperial units and rounded up to the nearest decimal point.

⁽²⁾Pre-drilling applies to timber with $G \leq 0.55$ (optional).

⁽³⁾Pre-drilling applies to timber with $G > 0.55$ (required).



MARINE ENVIRONMENTS

Can be used in aggressive environments and in areas near the sea thanks to the A4 | AISI316 stainless steel.