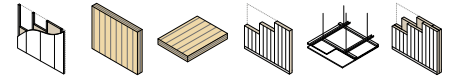


PANNUS

FIREPROOF COVER FOR METAL PIPE PENETRATIONS



CONFIGURABLE

Lightweight and adaptable, PANNUS can be configured directly on-site, even without knowing the design dimensions and positions of the penetrations.

AIDS COMPARTMENTALISATION

Certified in accordance with EN 1366-3 for non-insulated metal pipe and busbar penetrations. The non-combustible mineral wool fabric and ablative cooling treatment on the side in contact with the pipe prevent the spread of induction fires between compartments.

COMPOSITION

- ① aluminized glass wool felt cover
- ② ablative compounds



CODES AND DIMENSIONS

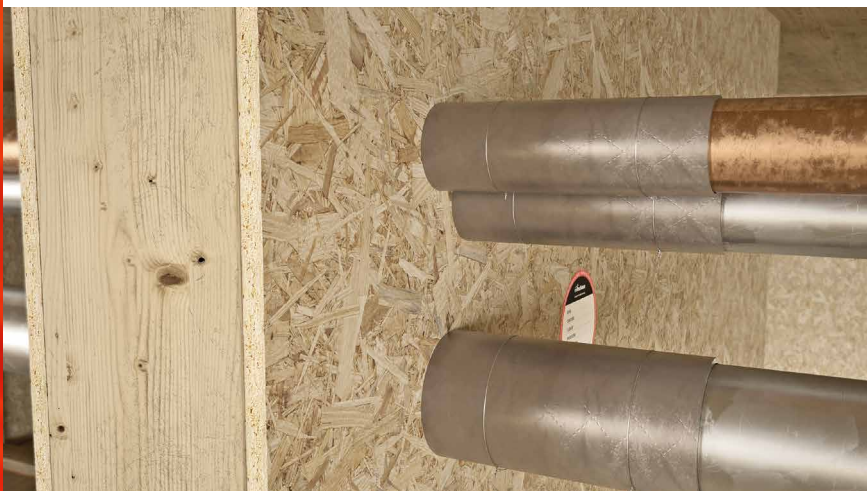
CODE	B [mm]	s [mm]	L [m]	B [in]	s [in]	L [ft]	
PANNUS240	240	7	5	9 1/2	1/4	16 4 7/8	1

TECHNICAL DATA

Properties	value	USC units
Density	100 kg/m ³	0.06 oz/in ³
Specific weight	0,25 kg/dm ³	0.14 oz/in ³
Fire resistance rating on CLT wall/floor ⁽¹⁾	E120	-

⁽¹⁾EN 1366-3 standard. For full details and tested configurations, please refer to the manual or contact our technical department for updates on new tests.

 Waste classification (2014/955/EU): 17 06 04.



FIELDS OF APPLICATION

- non-insulated metal pipes
- insulated copper pipes
- busbar

RECOMMENDATIONS FOR INSTALLATION

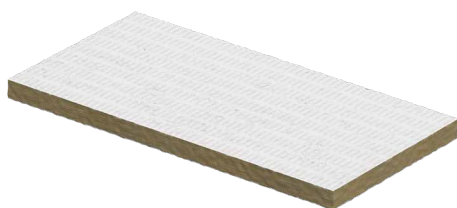


- 1 Measure the circumference of the metal pipe to be protected
- 2 Cut the amount of sheath needed to cover the pipe
- 3 Wrap the cover around the pipe, joining the ends and making sure the sheath adheres to the floor or wall (place the product on the side not exposed to fire)
- 4 Fix the sheath with intumescent tape or wire
- 5 Repeat the procedure, if necessary

RELATED PRODUCTS



MASS
page 324



PANEL
page 340